



# 2023-2024 YEAR AT A GLANCE

Below is a list of everything we have planned for the year. A flyer will be sent home prior to any events. For most up-to-date information, please check our Facebook group (Bosti PTA) or join our Remind group by texting @Bostipta to the number 81010.

(All events and/or dates are subject to change)

## AUGUST

- 28<sup>th</sup> Kindergarten Playdate 10 AM  
(Rain Date 8/29)
- 31<sup>st</sup> Spirit Apparel Sale Begins



## SEPTEMBER

- 5<sup>th</sup> Student Walk Through & Supply Drop Off 2 PM
- 6<sup>th</sup> First Day of School
- 11-22<sup>nd</sup> Mum Sale
- 14<sup>th</sup> Back to School Night:  
Preschool/Special Class/Special Area Teachers 5:45 - 6:15 PM  
Gr. 3-5 6:15 - 6:45 PM  
Gr. K-2 6:45 - 7:15 PM
- 14<sup>th</sup> Chocolate Sale Begins
- 15<sup>th</sup> Spirit Apparel Sale Ends Pick Up TBD
- 18<sup>th</sup> **PTA Meeting 7 PM**
- 22<sup>nd</sup> Welcome Back Social  
5:30-7:30 PM (Rain date 9/26)
- 26<sup>th</sup> PJ Day
- 26<sup>th</sup> Cookie Dough/Cherrydale Sale Begins
- 27<sup>th</sup> SBMT Meeting 8:35 AM

## OCTOBER

- 5<sup>th</sup> School Pictures
- 11-12<sup>th</sup> Fall Book Fair
- 11<sup>th</sup> Evening Book Fair 6-7:30 PM
- 11<sup>th</sup> Mum Pick up 6 - 7:30 PM
- 13<sup>th</sup> Cookie Dough/Cherrydale Sale Ends
- 13<sup>th</sup> Chocolate Sale Ends
- 16<sup>th</sup> **PTA Meeting 7 PM**
- 17<sup>th</sup> White Post Fundraiser Begins
- 20<sup>th</sup> Halloween Spooktacular  
5:30-8:30 PM (Rain Date 10/27)
- 24-25<sup>th</sup> Pumpkin Patch
- 25<sup>th</sup> SBMT Meeting 8:35 AM
- 30<sup>th</sup> Greeting Card Sale Begins

## NOVEMBER

- 1<sup>st</sup> Make Up Picture Day
- 2<sup>nd</sup> McDonald's Night 5 - 7 PM
- 6<sup>th</sup> White Post Fundraiser Ends
- 9<sup>th</sup> McGuire's Comedy Club Night  
6:30 PM
- 13<sup>th</sup> **PTA Meeting 7 PM**
- 13<sup>th</sup> Greeting Card Sale Ends
- 13-17<sup>th</sup> Food Drive
- 13-27<sup>th</sup> Gift Card Sale, Pick Up TBD
- 21<sup>st</sup> White Post & Cookie Dough/  
Cherrydale Pick Up 6 - 7:30 PM
- 27<sup>th</sup> 5<sup>th</sup> Grade Circus Begins
- 28<sup>th</sup> PJ Day
- 29<sup>th</sup> SBMT Meeting 8:35 AM

## DECEMBER

- 1<sup>st</sup> 5<sup>th</sup> Grade Circus Ends  
Evening Performance @  
OBMS 7 PM
- 5-6<sup>th</sup> Holiday Fair
- 5<sup>th</sup> Evening Holiday Fair 6-7:30 PM
- 8<sup>th</sup> Early Dismissal
- 18<sup>th</sup> **PTA Meeting 7 PM**
- 18<sup>th</sup> Gift of Reading
- 20<sup>th</sup> Winter Wishes
- 20<sup>th</sup> SBMT Meeting 8:35 AM
- 22<sup>nd</sup> PJ Day
- 22<sup>nd</sup> Pre-K Polar Express
- TBD Greeting Card Pick Up

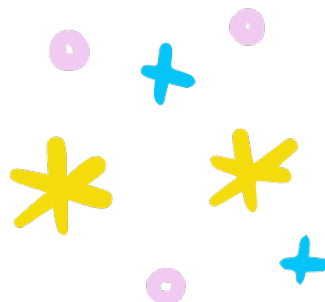
## JANUARY

- 5<sup>th</sup> Family Fun Night 6:30 – 8:30 PM
- 22<sup>nd</sup> **PTA Meeting 7 PM**
- 24<sup>th</sup> SBMT Meeting 8:35 AM
- 29<sup>th</sup> Island Empanada Fundraiser
- 30<sup>th</sup> PJ Day



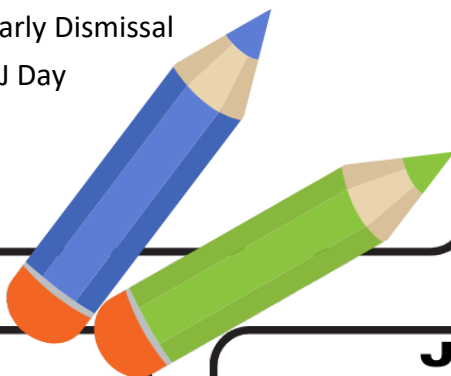
## FEBRUARY

- 1-16<sup>th</sup> Spirit Apparel Sale; Pick Up TBD
- 2<sup>nd</sup> Early Dismissal
- 9<sup>th</sup> Someone Special Dance  
5:30 - 7 PM (Pre-K- 2)  
7:30 - 9 PM (3<sup>rd</sup> – 5<sup>th</sup> Grade)
- 12<sup>th</sup> **PTA Meeting 7 PM**
- 26<sup>th</sup> Hershey Park Sale Begins
- 27<sup>th</sup> PJ Day
- 28<sup>th</sup> SBMT Meeting 8:35 AM



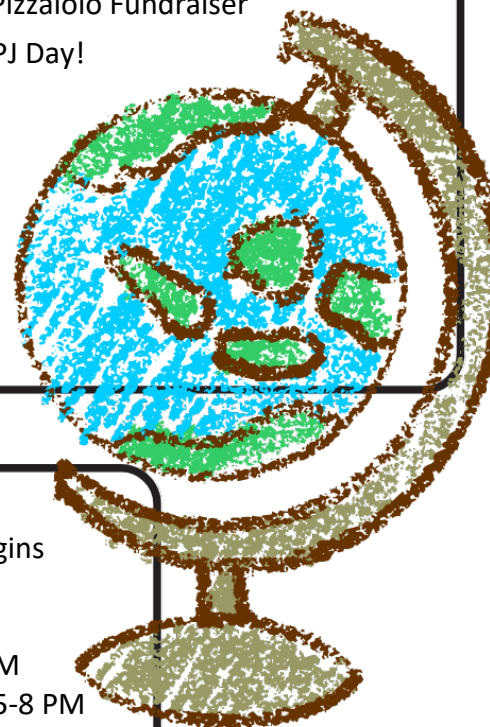
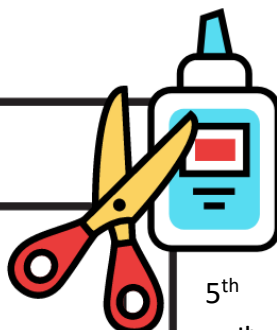
## MARCH

- 6-7<sup>th</sup> Spring Book Fair
- 6<sup>th</sup> Evening Book Fair 6 - 7:30 PM
- 11<sup>th</sup> Hershey Park Sale Ends; Pick Up TBD
- 11<sup>th</sup> Restaurant Night
- 18<sup>th</sup> **PTA Meeting 7 PM**
- 20<sup>th</sup> SBMT Meeting 8:35 AM
- 22<sup>nd</sup> Early Dismissal
- 26<sup>th</sup> PJ Day



## APRIL

- 5<sup>th</sup> Craft Night 6 – 8 PM
- 15<sup>th</sup> **PTA Meeting 7 PM**
- 15-30<sup>th</sup> Spring Plant Sale
- 16<sup>th</sup> Pizzaiolo Fundraiser
- 30<sup>th</sup> PJ Day!



## MAY

- 1<sup>st</sup> SBMT Meeting 8:35 AM
- 6-10<sup>th</sup> Teacher & Staff Appreciation Week
- 20<sup>th</sup> **PTA Meeting 7 PM**
- 28<sup>th</sup> PJ Day!
- 29<sup>th</sup> SBMT Meeting 8:35 AM
- 30<sup>th</sup> Field Day (Rain Date 5/31)
- TBD LI Ducks Game
- TBD Spring Plant Sale Pick Up

## JUNE

- 5<sup>th</sup> School Supply Sale Begins
- 7<sup>th</sup> Early Dismissal
- 10<sup>th</sup> **PTA Meeting 7 PM**
- 12<sup>th</sup> SBMT Meeting 8:35 AM
- 18<sup>th</sup> Urban Air Fundraiser 5-8 PM
- 24-26<sup>th</sup> Early Dismissal

